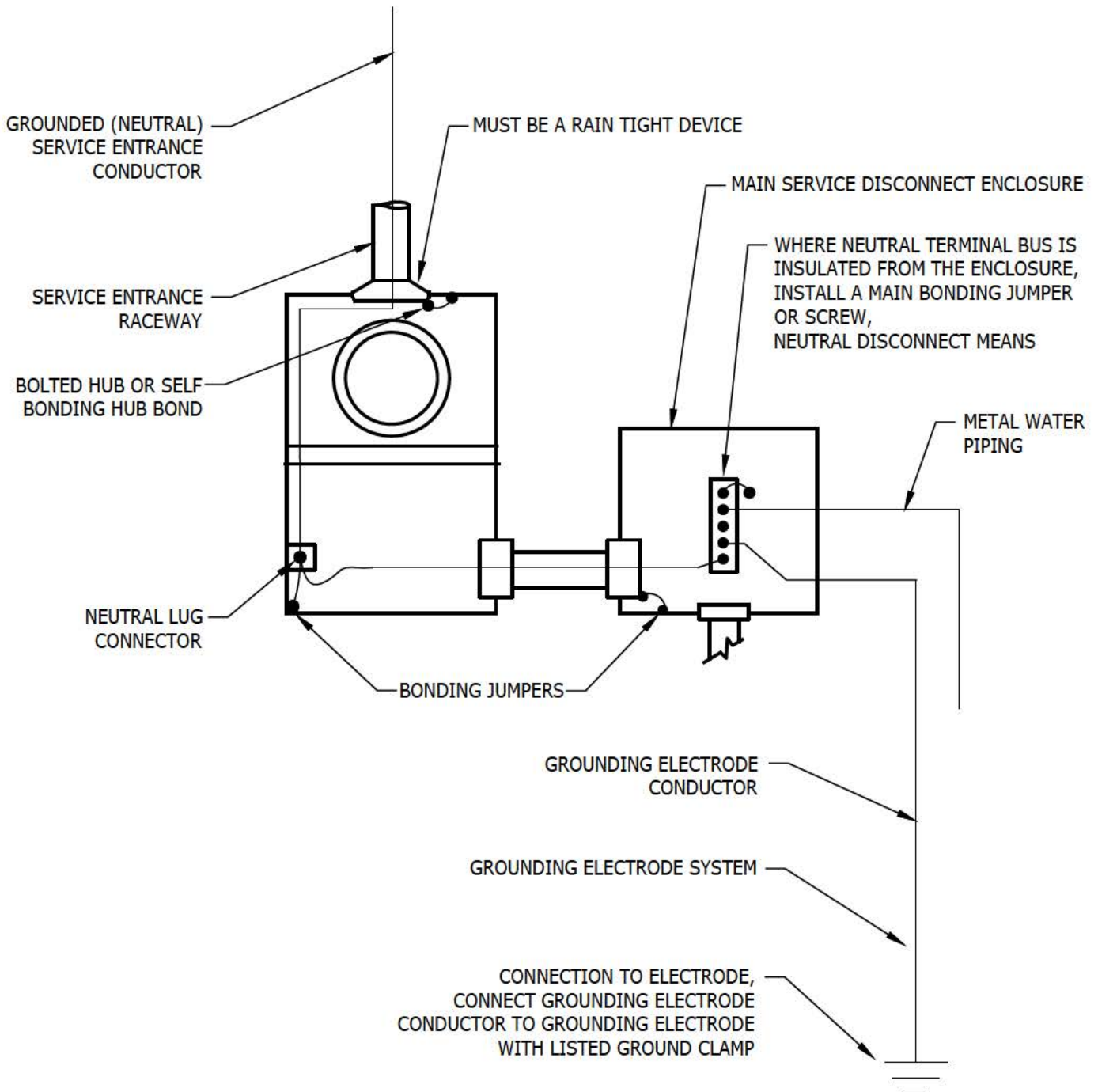


**USE:** GENERAL CUSTOMER INFORMATION FOR GROUNDING AND BONDING

## SINGLE OR THREE PHASE OVERHEAD RESIDENTIAL SERVICE (METER SOCKET AND DISCONNECTS)



SEE NEC ARTICLE 250 FOR REFERENCE.

FORMALLY: SR-453 Page 7