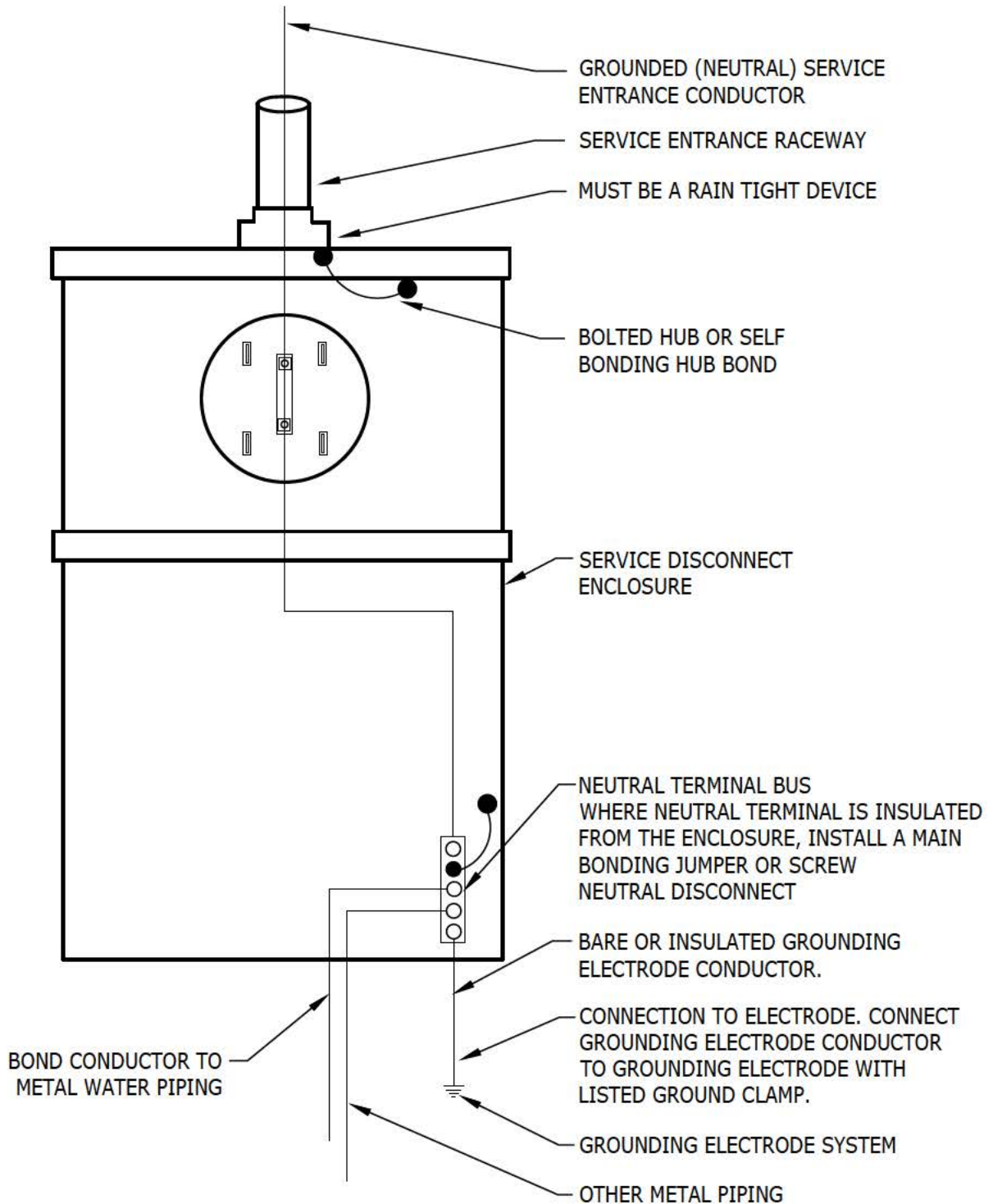


USE: GENERAL CUSTOMER INFORMATION FOR GROUNDING AND BONDING

SINGLE PHASE OVERHEAD RESIDENTIAL SERVICE (METER SOCKET & LOAD CENTER)



SEE NEC ARTICLE 250 FOR REFERENCE.

FORMALLY: SR-453 Page 8