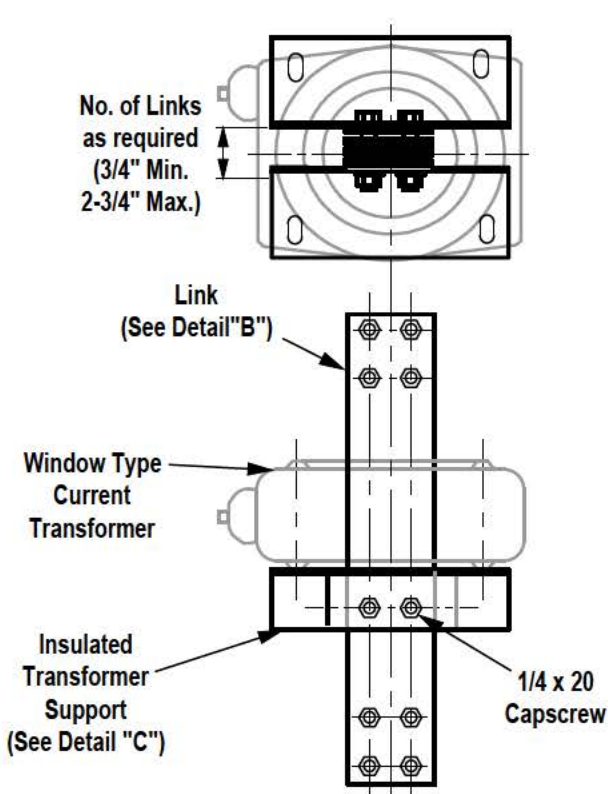


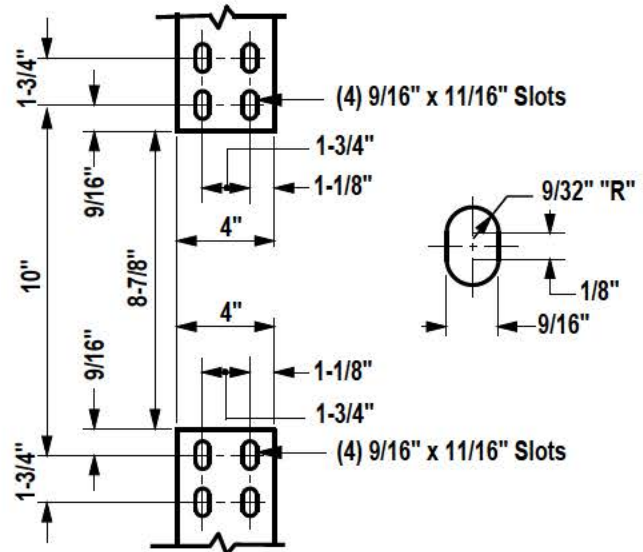
# REMOVABLE BUS LINKS AND CT SUPPORTS

## 1001-3000 A, 0-600 V

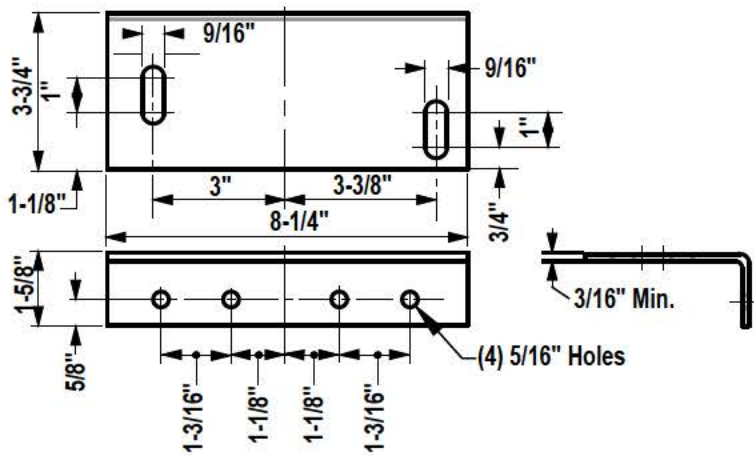
EUSERC DWG. NO. 330



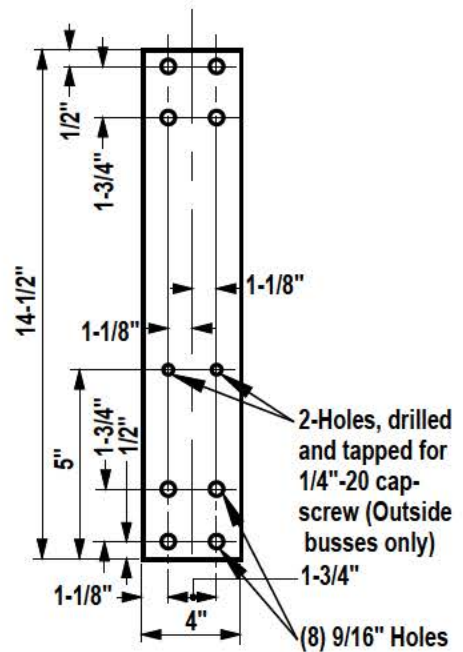
**REMOVABLE LINK ASSEMBLY**  
(Furnished by Manufacturer)



**DETAIL "A"**  
DRILLING AND SPACING OF BUS



**DETAIL "C"**  
INSULATED SUPPORT FOR  
CURRENT TRANSFORMER  
(Material: Insulating, Non-Tracking)



**DETAIL "B"**  
1/4" X 4" LINK  
(Same Material as Bus)

NOTE: 1. Manufacturer to provide 1/2 inch hex head bolts, nuts, & lock washers.



INITIATED BY	SC
STANDARDS COMM.	10-81

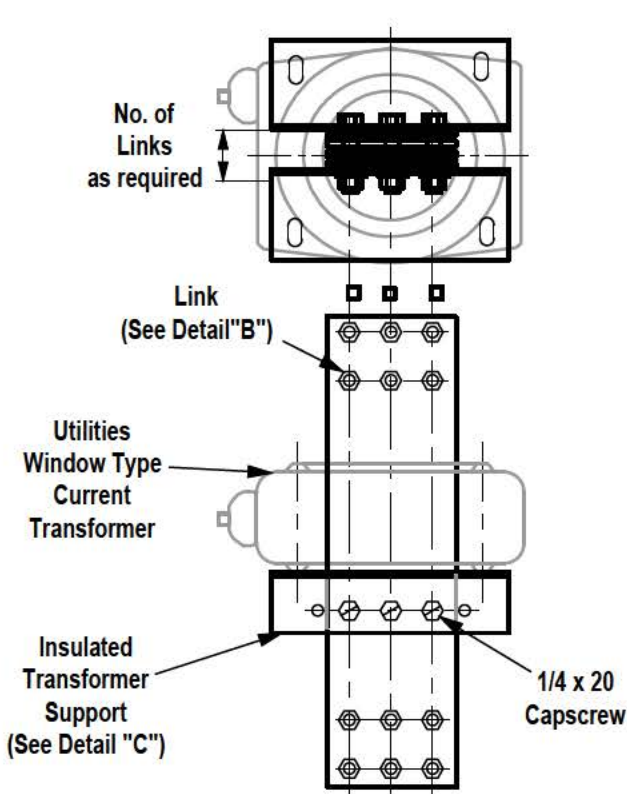
REVISION NO.	1
STANDARDS COMM.	10-85
EFFECTIVE DATE	1-86

SR-439  
Pg. 1 of 2

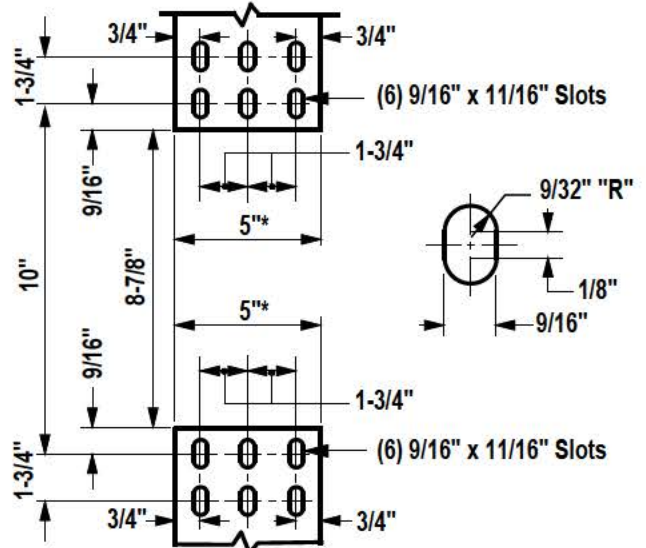
# REMOVABLE BUS LINKS AND CT SUPPORTS

## 3001 A and Larger, 0-600 V

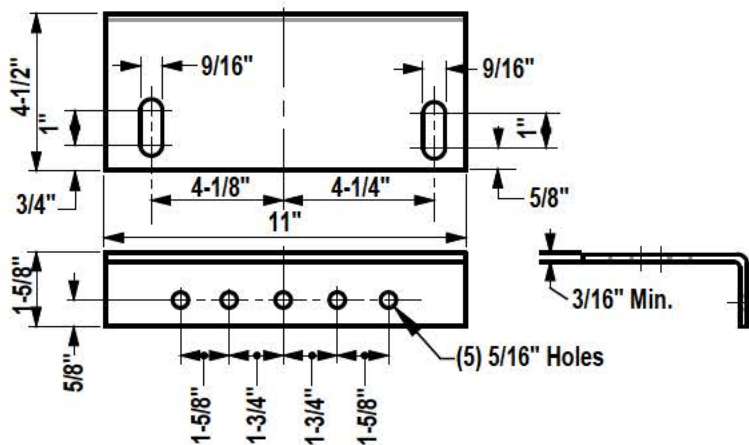
EUSERC DWG. NO. 331



**REMOVABLE LINK ASSEMBLY**  
(Furnished by Manufacturer)

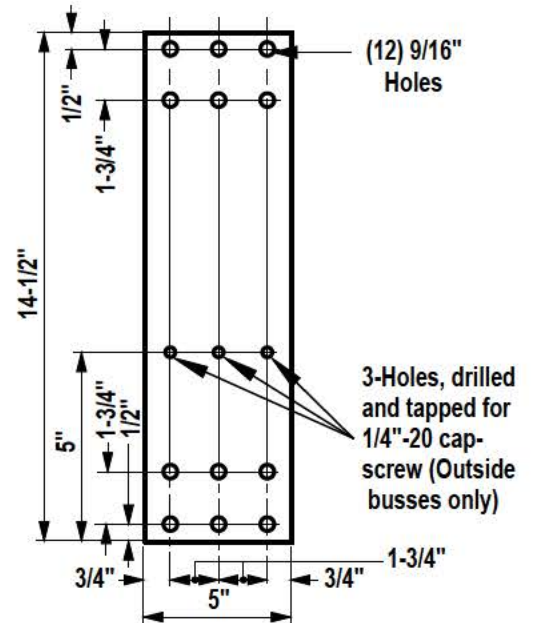


**DETAIL "A"**  
DRILLING AND SPACING OF BUS



**DETAIL "C"**

**INSULATED SUPPORT FOR CURRENT TRANSFORMER**  
(Material: Insulating, Non-Tracking)



**DETAIL "B"**  
1/4" X 5" LINK  
(Same Material as Bus)

- NOTE:**
1. Manufacturer to provide 1/2 inch hex head bolts, nuts, & lock washers.
  2. Consult Design, Service Requirements & Service Delivery Department for use of bus bars larger than 5".



INITIATED BY	SC
STANDARDS COMM.	12-81

REVISION NO.	2
STANDARDS COMM.	8-93
EFFECTIVE DATE	1-94

SR-439  
Pg. 2 of 2