





NOTES:

1. Approved Equipment
 - a. Milbank Catalog No. CP3FFBCxxxxxAxxTEP
 - b. Milbank Catalog No. CP3FGBCxxxxxAxxTEP
2. Cabinet usage is limited to commercial customers with a load 800A or less.
3. See SR-405 for general metering installation requirements.
4. A level standing and working surface shall be provided and maintained in front of each metering installation. A clear and unobstructed working space shall be provided above this surface, see SR-405 for requirements.
5. Two 1/2 inch steel bolts shall be provided for each mounting positions. Each bolt shall be secured in place and furnished with a spring washer and a nut. The spring washer may be either a cone type (Belleville) or a split ring washer and a flat washer.
6. All parts shall be plated to prevent corrosion.
7. Customer to provide and terminate service conductor.
8. The point of delivery shall be at a secondary junction box or at a pad-mount transformer or at some other point as may be designated by Design Services. The customer's conductors between the point of delivery of the service and the cabinet shall pass through no other equipment. The "neutral" (and the "power leg" if delta-connected 240/120V service is furnished) shall be identified per the National Electrical Code. All service conductors shall be marked (taped) in accordance with SR-405 Note 16. If conductors are parallel, they shall be grouped and identified at the point of delivery. If more than one raceway of magnetic metal conduit is used for parallel conductors, one conductor from each phase plus one neutral conductor must pass through each conduit. The neutral of each set of service conductors must be identified with an address tag at the transformer or junction box location. Example: Dymo Aluminum embossing tape or other approved methods. Customer conductors that connect to Service Provider equipment shall be no greater than 600kcmil.
9. Enclosure door shall be equipped with a handle operated latching mechanism, and lockable with a padlock having a 5/16 inch lock-shaft. A device shall be provided to secure the door in the open position at 90-degrees or more.
10. All section covers shall be independently removable and equipped with stops to prevent inward swinging beyond the front surface of the service section. Upper cover shall be non-removable when meter is in place. Lower cover shall be sealable and permanently labeled: "DO NOT BREAK SEAL, NO FUSES INSIDE".
11. Internal equipment shall be secured in place without screws or nuts on the outer surface of the enclosure that may be loosened from the outside.
12. All utility compartments (meter cover, demand reset cover, and pull section) shall be sealable and pad-lockable.
13. The meter shall be enclosed. The enclosing cover (top and front) shall be hinged or the top may be fixed in place if the front is removable.
14. Ringless sockets are not acceptable.
15. A protective metallic barrier (16 gauge minimum) shall be installed between the utility wireway and the customer distribution section. There shall be a 1/4 inch minimum clearance between the customer section and protective barrier to prevent screws and bolts from protruding into the termination section.
16. At no time shall an alternate power source exist in parallel operation with The Company's distribution system. Any mechanical or automatic means of source transfer or throw-over must operate in open transition (break-before-make).

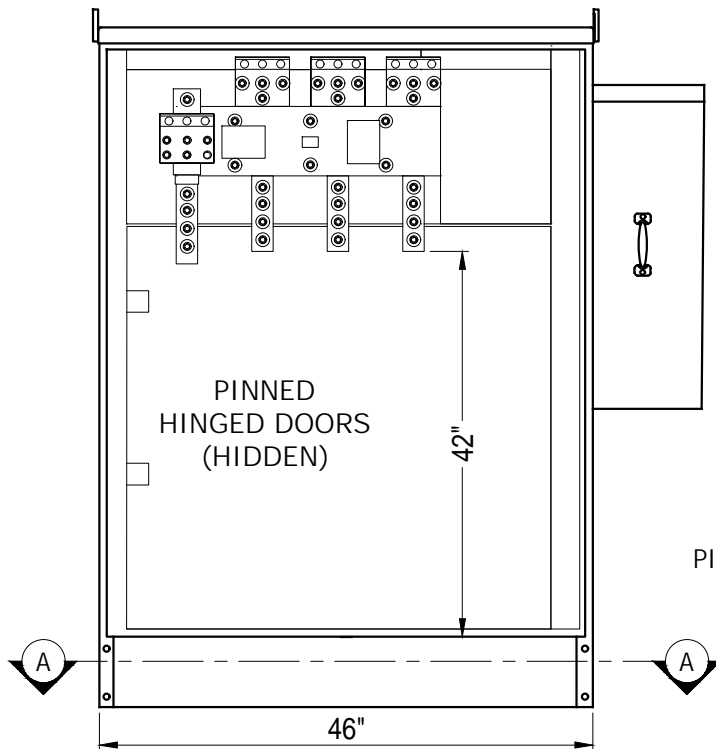
 Tucson Electric Power	 SANTA CRUZ COUNTY	INITIATED BY	EKD	REVISION NO.	0	SR-429 Pg. 1 of 2
		ESR COMM.	2-24	ESR COMM.	2-24	
				EFFECTIVE DATE	2-24	

USE: COMMERCIAL

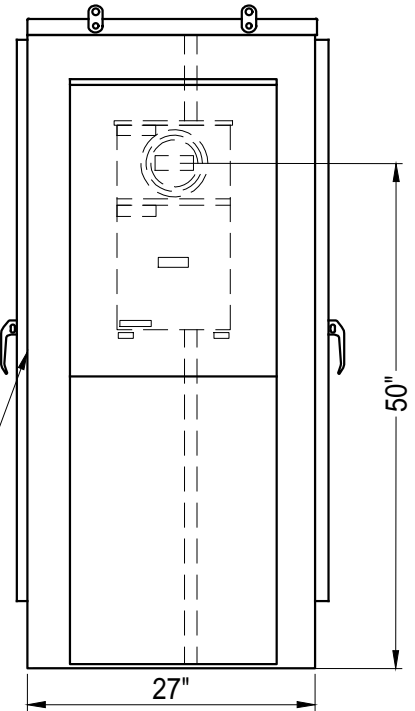
COMMERCIAL CT POWER AND CONTROL CABINET, 400 - 800A



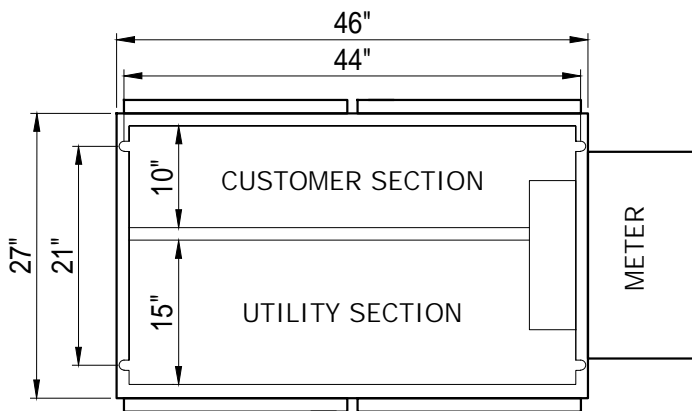
EUSERC DWG NO. 310



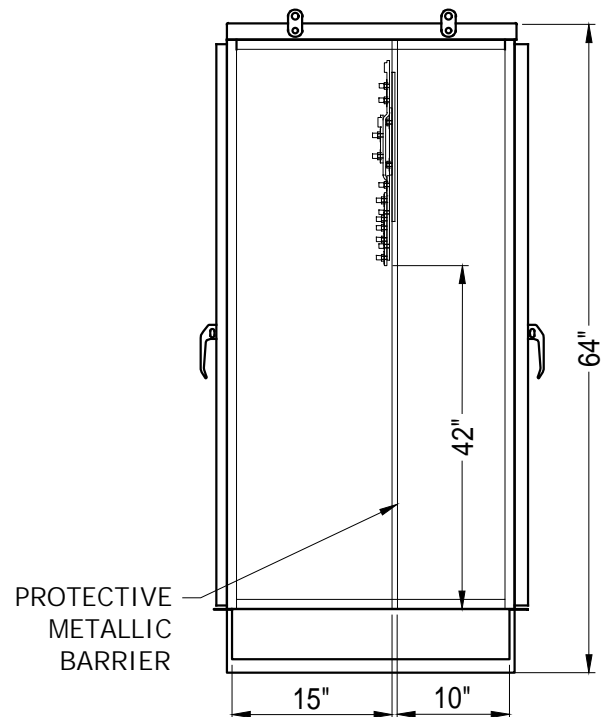
FRONT VIEW
UTILITY SECTION



SIDE VIEW
METER ENCLOSURE



SECTION A-A
MOUNTING DETAIL



SIDE VIEW
INTERIOR DETAIL