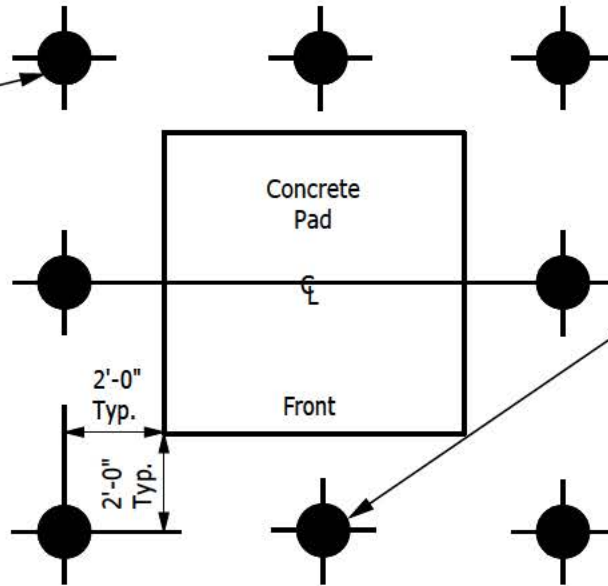


EQUIPMENT BARRIER

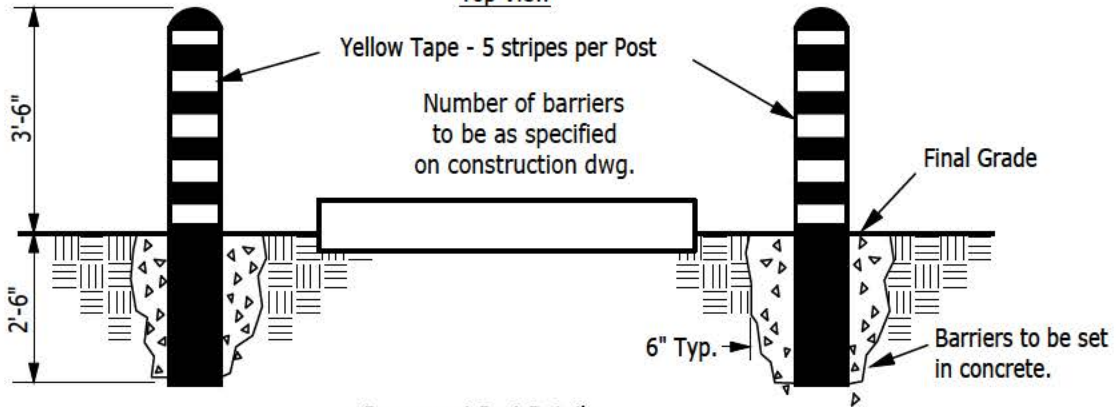


Use: Protect equip. from damage.

4" steel pipe filled with concrete

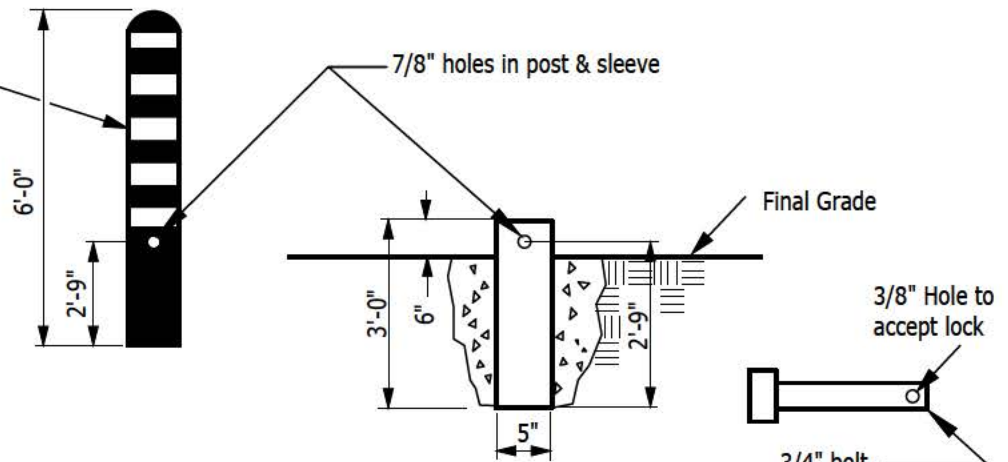


Top View



Permanent Post Detail

4" removable post not to be concrete filled. Top of post shall be permanently capped.



Removable Post Detail

Paint: All pipe surfaces to have one prime coat of Red Oxide and one finish coat of dull black enamel.

Tape: Yellow Reflective tape, 4" wide.