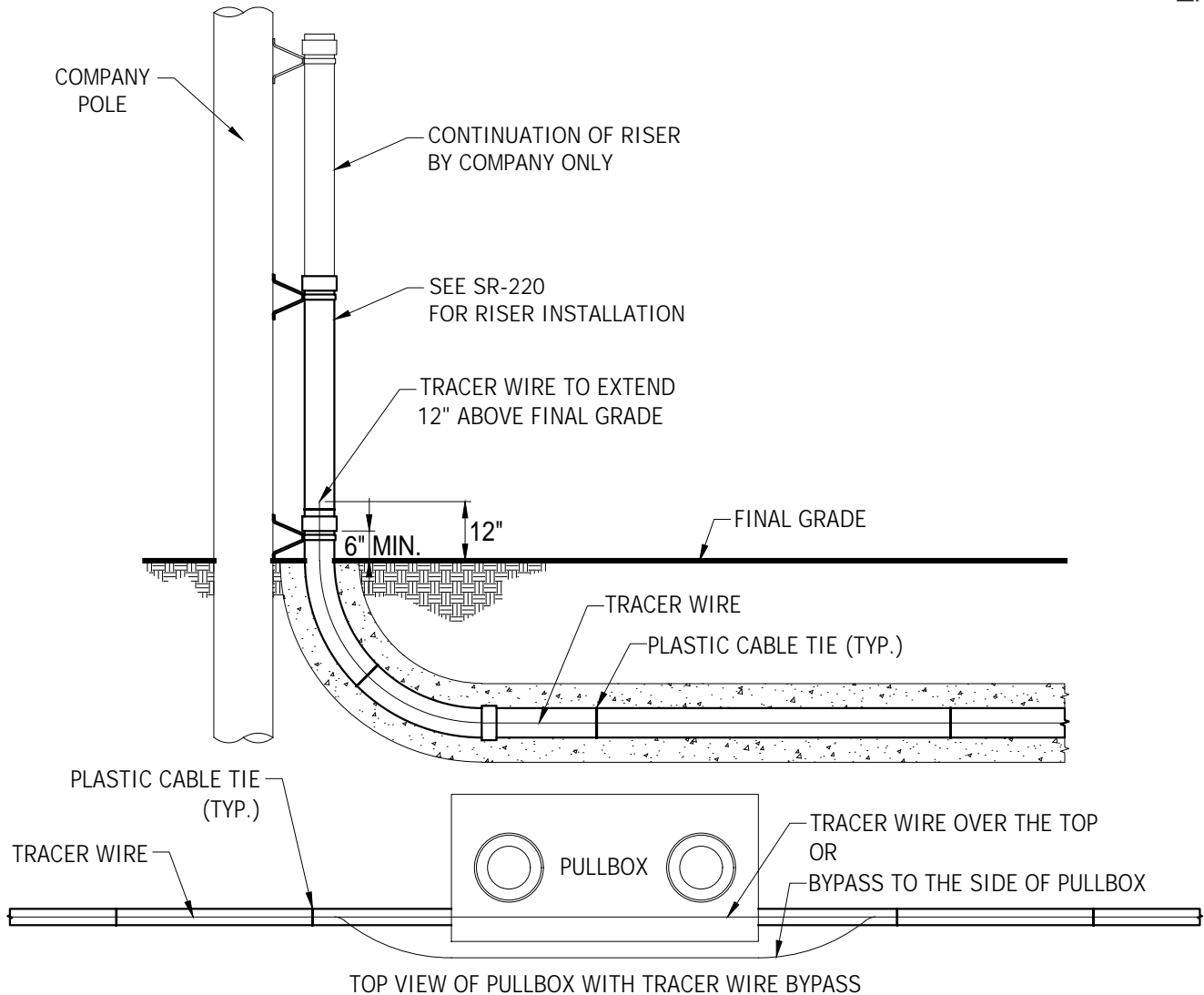


USE: Support line location of 46kV underground circuits.

## TRACER WIRE INSTALLATION, 46kV UNDERGROUND



TOP VIEW OF PULLBOX WITH TRACER WIRE BYPASS

**NOTES:**

1. TRACER WIRE SHALL EXTEND 12 INCHES ABOVE FINAL GRADE AT ALL POLES OR EQUIPMENT LOCATIONS. TRACER WIRE SHALL BE TIED WITH PLASTIC CABLE TIES (ZIP TIE) ABOVE GRADE, MINIMUM OF ONE TIME ON SWEEP AND EVERY 15 FEET ALONG LENGTH OF RUN TO THE OUTSIDE OF THE CONDUIT, PRIOR TO CONCRETE ENCASEMENT AND BACKFILL.
2. CONTINUOUS RUN OF TRACER WIRE IS REQUIRED BETWEEN POLES AND SHOULD BY-PASS ANY PULLBOX EITHER TO THE SIDE OR OVER THE TOP.
3. CUSTOMER IS RESPONSIBLE FOR PROTECTION OF WIRE DURING BACKFILL. VERIFICATION OF WIRE FUNCTION WILL BE COMPLETED BY TEP UPON COMPLETION OF BACKFILL, PRIOR TO MANDREL PULL AND ACCEPTANCE OF CONDUIT.
4. SPLICING OF WIRE IS NOT ALLOWED, UNLESS LENGTH OF RUN EXCEEDS 2500 FEET. ANY SPLICE CONNECTION MUST BE SEALED AND RATED FOR DIRECT BURIAL, KING INNOVATION, DRYCONN WATERPROOF CONNECTORS (PART NO. 10444) OR EQUIVALENT.
5. TRACER WIRE SHALL BE #12 SOLID COPPER CONDUCTOR, INSULATED WITH RED HIGH MOLECULAR WEIGHT POLYETHYLENE (HMWPE), SUITABLE FOR CONTINUOUS SERVICE IN DIRECT BURIAL, WET AND DRY LOCATIONS. APPROVED WIRE, KRISTECH PE TRACER-12-RED-CU-HMWPE-600V-2500R (PART NO. 2663514) OR EQUIVALENT.
6. REFER TO SR-205 FOR CONCRETE REQUIREMENTS.

 <b>TEP</b> Tucson Electric Power	 <b>UniSourceEnergy</b> SERVICES SANTA CRUZ COUNTY	INITIATED BY	EKD	REVISION NO.	0	SR-206 Pg. 1 of 1
		ESR COMM.	11-22	ESR COMM.	-	
ESR COMM.	11-22	EFFECTIVE DATE	1-23			